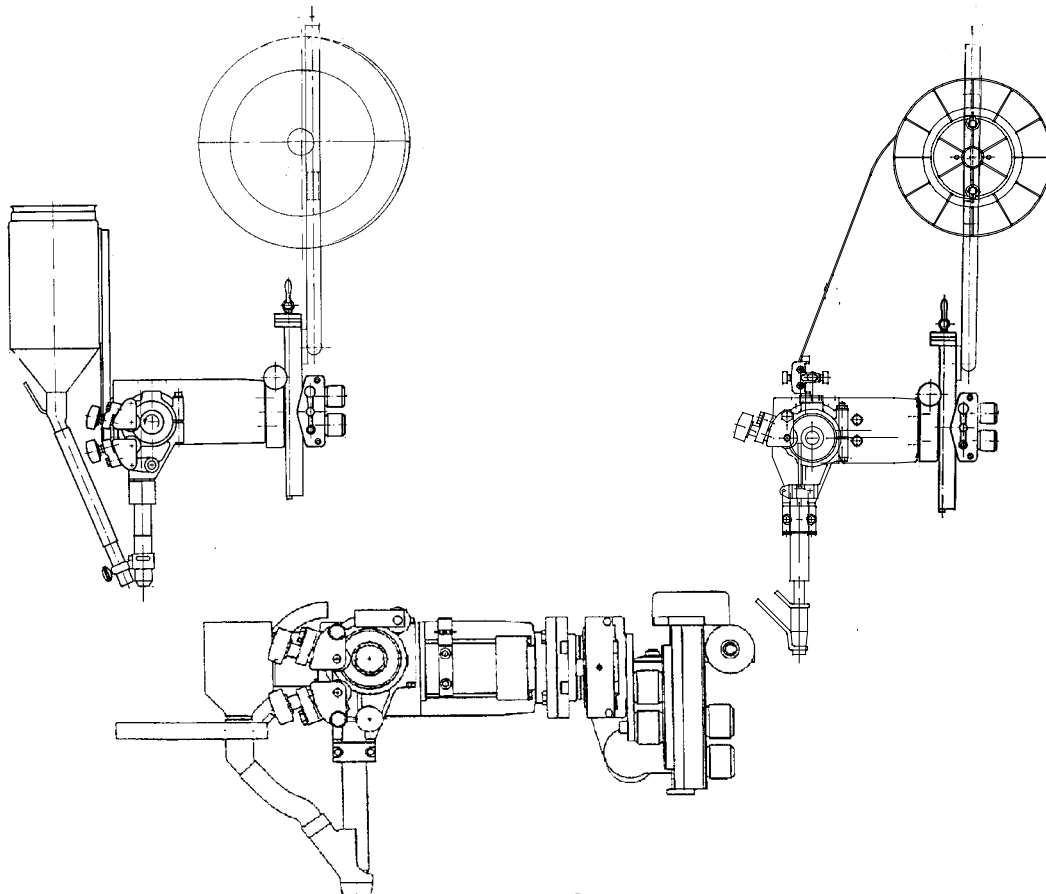


A6 S Arc Master ***A6 S G Master*** ***A6 S Compact 500***

A6 SFE1 / A6 SFE2 / A6 SGE1/ A6 SFE1C

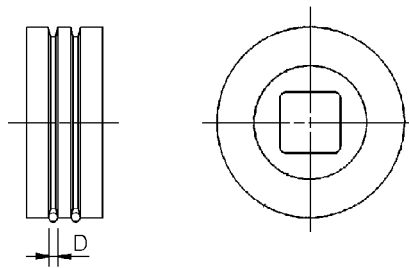
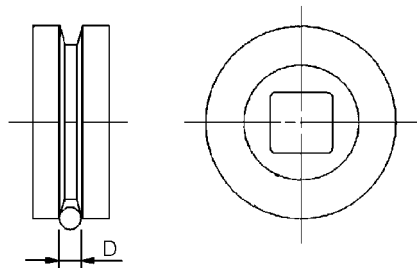


Bruksanvisning
Brugsanvisning
Bruksanvisning
Käyttöohjeet
Instruction manual
Betriebsanweisung
Manuel d'instructions

Gebruiksaanwijzing
Instrucciones de uso
Istruzioni per l'uso
Manual de instruções
Οδηγίες χρήσεως
Instrukcja obsługi

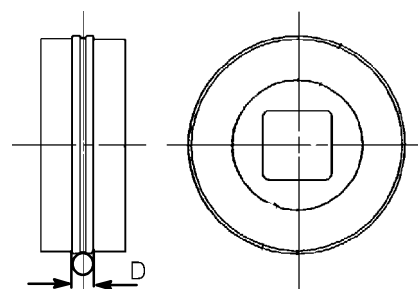
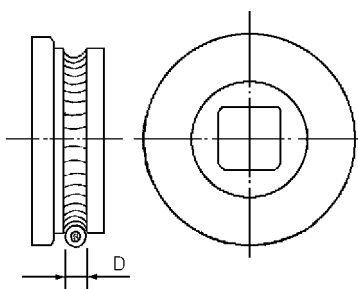
Slitdelar Sliddele Slitedeler Kulutusosat Wear components Verschleissteile Pièces d'usure Slijtageonderdelen Piezas de desgaste Parti di usura Peças expostas a desgaste Αναλώσιμα ανταλλακτικά Części zużywalne

Feed rollers



SAW and MIG/MAG	
Part no	D (mm)
0218 510 281	1,6
0218 510 282	2,0
0218 510 283	2,5
0218 510 286	4,0
0218 510 287	5,0
0218 510 288	6,0

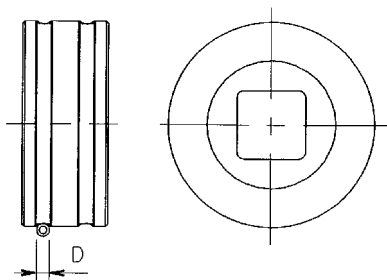
SAW Twin (D35)	
Part no	D (mm)
0218 522 480	2,5
0218 522 481	3-3,2
0218 522 484	2,0
0218 522 486	1,2
0218 522 487	1,0
0218 522 488	1,6



SAW and MIG/MAG tubular wire	
Part no	D (mm)
0146 024 880	0,8-1,6
0146 024 881	2,0-4,0

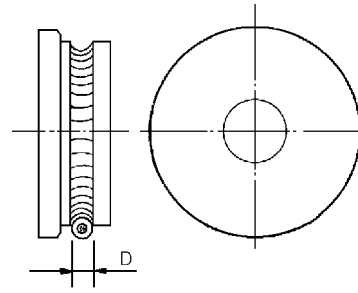
MIG/MAG	
Part no	D (mm)
0145 538 880	0,6
0145 538 881	0,8
0145 538 882	1,0
0145 538 883	1,2

	D (mm)
148 772-880	2,0-3,0

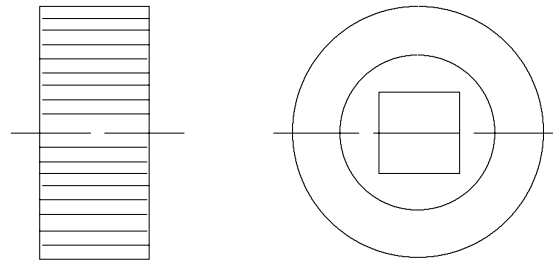


Pressure rollers

SAW and MIG/MAG tubular wire	
Part no	D (mm)
0146 025 880	0,8-1,6
0146 025 881	2,0-4,0
0146 025 882	5,0-7,0

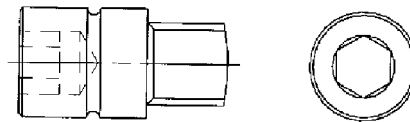


SAW Twin	
Part no	
0218 524 580	
0146 253 001	Stub shaft
0144 953 001	Spherical ball bearing
0190 452 178	Washer



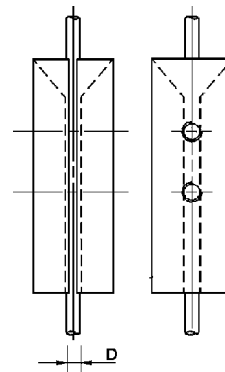
Stub shaft for pressure roller

SAW tubular wire
Part no
0212 901 101

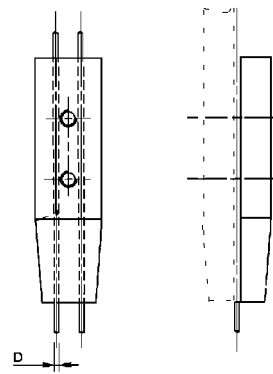


Contact jaws

SAW HD (D35)	
Part no	D (mm)
0265 900 880	3,0
0265 900 881	3,2
0265 900 882	4,0
0265 900 883	5,0
0265 900 884	6,0

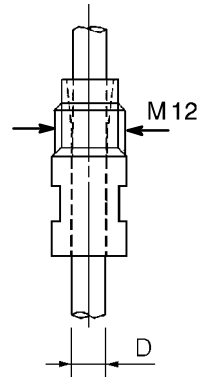


SAW Twin HD	
Part no	D (mm)
0265 902 880	2,5-3,0
0265 902 881	2,0
0265 902 882	1,6
0265 902 883	4,0

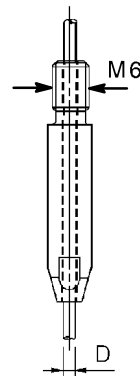


Contact tip

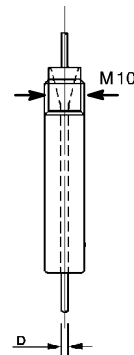
SAW LD (D20)	
Part no	D (mm)
0154 623 003	4,0
0154 623 004	3,2
0154 623 005	3,0
0154 623 006	2,5
0154 623 007	2,0
0154 623 008	1,6



MIG/MAG and SAW Twin LD (D35)	
Part no	D (mm)
0153 501 002	0,8
0153 501 004	1,0
0153 501 005	1,2
0153 501 007	1,6
0153 501 009	2,0
0153 501 010	2,4-2,5

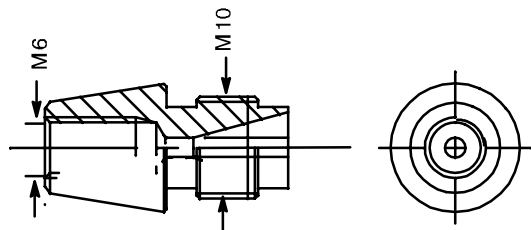


MIG/MAG (D35)	
Part no	D (mm)
0258 000 908	1,2
0258 000 909	1,6
0258 000 910	2,0
0258 000 911	2,4
0258 000 913	1,0
0258 000 914	0,8
0258 000 915	3,2



Adapter for contact tip

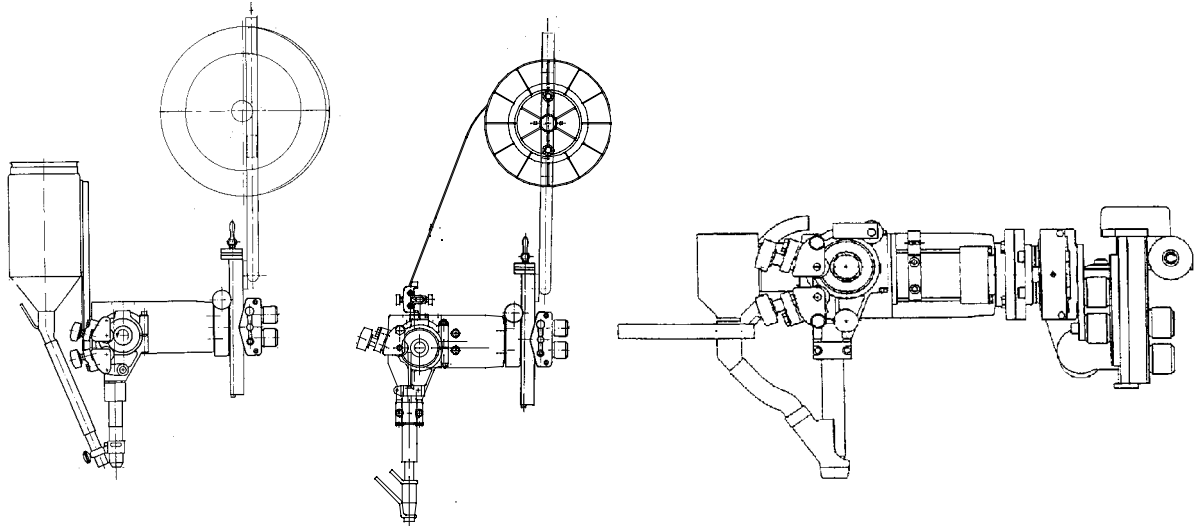
SAW and MIG/MAG (D35)	
Part no	D (mm)
0147 333 001	M6 / M 10



**Reservdelsförteckning Reservdelsfortegnelse Reservedelsliste
 Varaosaluettelo Spare parts list Ersatzteilliste Liste de pièces détachées
 Reserveonderdelenlijst Lista de repuestos Elenco ricambi Lista de peças
 sobressalentes Πίνακας ανταλλακτικών μερών Spis części zapasowych**

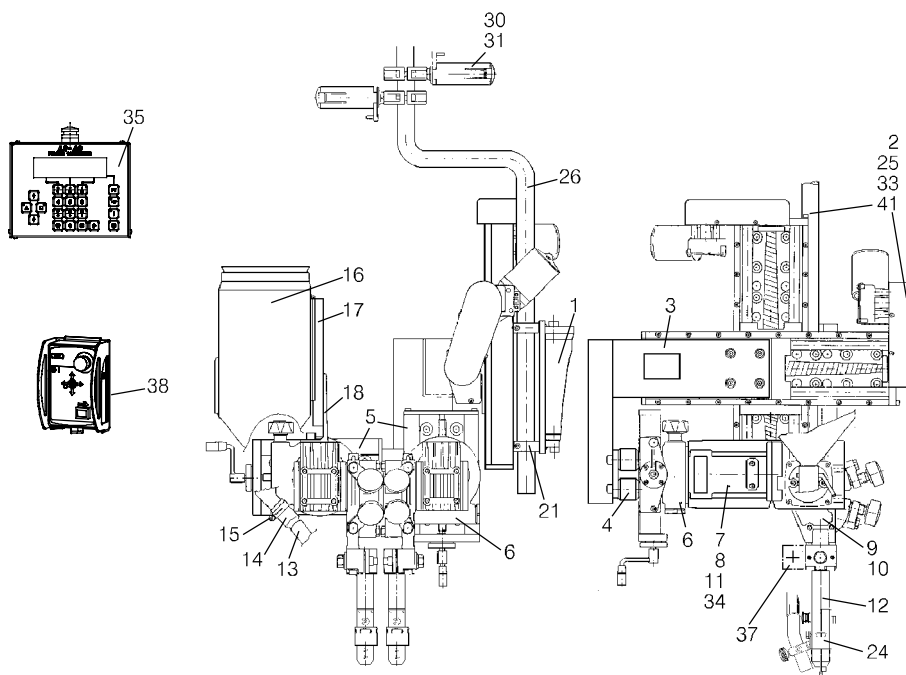
A6 SFE1 / A6 SFE2 / A6 SGE1/ A6 SFE1C

Edition 2009-03-09

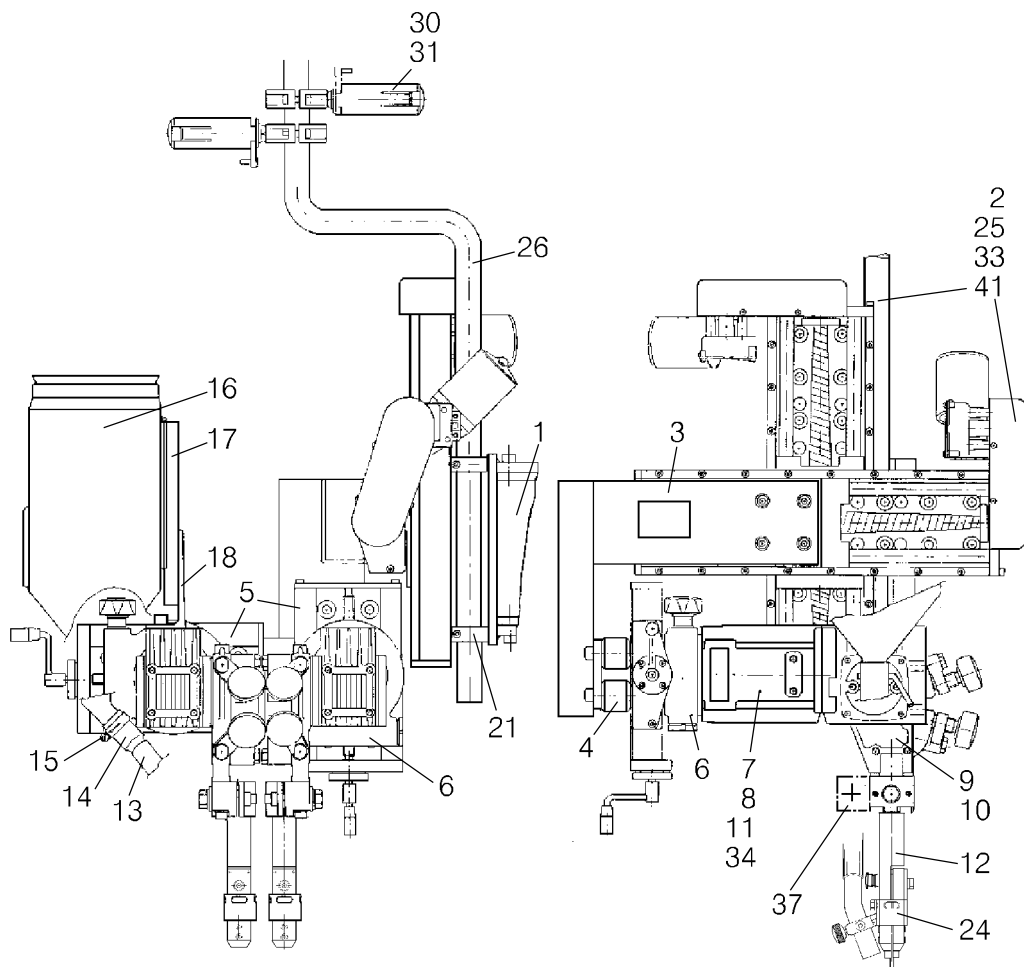


Ordering no.	Denomination	Notes
0457720880	A6 SFE2	Automatic welding machine with PEH and A6 PAV
0457720883	A6 SFE2	Automatic welding machine without PEH
0457720884	A6 SFE2	Automatic welding machine without PEH
0457720885	A6 SFE2	Automatic welding machine with PEH
0457720887	A6 SFE2	Automatic welding machine with PEH
0457720889	A6 SFE2	Automatic welding machine with PEH and A6 PAV
0457720891	A6 SFE2	Automatic welding machine with PEH, A6 GMH
0457720893	A6 SFE2	Automatic welding machine with PEH, A6 GMH
0456563880	A6 SGE1	Automatic welding machine without PEH
0456563881	A6 SGE1	Automatic welding machine without PEH
0456563882	A6 SGE1	Automatic welding machine without PEH
0456563883	A6 SGE1	Automatic welding machine without PEH
0456563884	A6 SGE1	Automatic welding machine without PEH
0456563885	A6 SGE1	Automatic welding machine without PEH
0456563886	A6 SGE1	Automatic welding machine without PEH
0456563887	A6 SGE1	Automatic welding machine without PEH
0456563888	A6 SGE1	Automatic welding machine without PEH
0456564880	A6 SGE1	Automatic welding machine with PEH
0456564881	A6 SGE1	Automatic welding machine with PEH
0456564882	A6 SGE1	Automatic welding machine with PEH
0456564883	A6 SGE1	Automatic welding machine with PEH
0456564884	A6 SGE1	Automatic welding machine with PEH and A6 PAV
0456564885	A6 SGE1	Automatic welding machine with PEH and A6 PAV
0456564886	A6 SGE1	Automatic welding machine with PEH and A6 GMH
0456564887	A6 SGE1	Automatic welding machine with PEH and A6 GMH
0416967880	A6 Compact 500 (A6-SFE1C)	Automatic welding machine

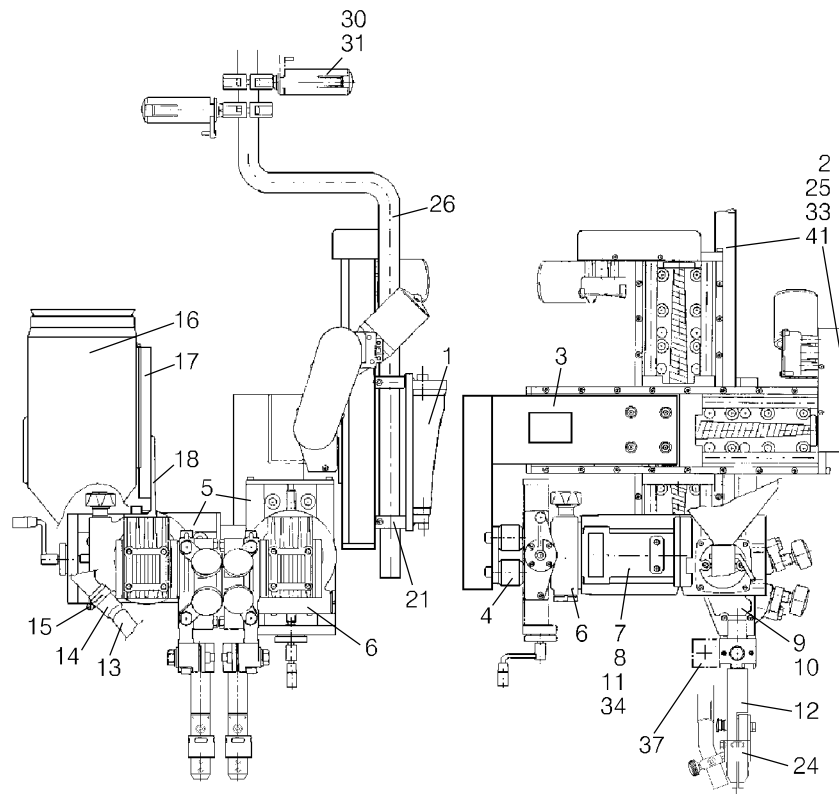
Item no.	Qty	Ordering no.	Denomination	Notes
		0457720880	Automatic welding machine with PEH and A6 PAV	A6 SFE2
1	1	0334549880	Swivel Bracket	
2	2	0334333884	Motorised Slide	A6 Slide (L=300), see separate manual
3	1	0334557880	Mounting bracket	
4	8	0278300180	Insulator	200 V
5	2	0154465880	Slide manually operated	L = 90
6	2	0671171580	Angular slide	
7	1	0145063906	Motor with gear	A6 VEC (156:1), see separate manual
8	1	0145063896	Motor with gear	A6 VEC (156:1), see separate manual
9	1	0147639880	Wire straightener (right mounted)	
10	1	0147639880	Wire straightener (right mounted)	
11	2	0218810183	Insulated hand wheel	
12	2	0334290880	Contact Equipment	D35 / L220
13		0333645880	Flux hose	L = 1,000
14	1	0153491001	Branching Tube	
16	1	0147649881	Flux hopper	10 l
17	1	0148487880	Holder	
18	1	0334294001	Bracket	
26	1	0334694001	Pipe bend	
27	4	0154734001	Brake hub lock	
30	2	0146967880	Brake hub	
33	2	0460745880	Motor cable	2 m
34	2	0456490882	Motor cable	3 m
35	2	0443741880	Control box	PEH, see separate manual
37	2	0456504883	Cable (arc voltage)	3 m
38	1	0460697880	Control system for motorised slides	A6 PAV, see separate manual
80	1	0457713001	Bar	



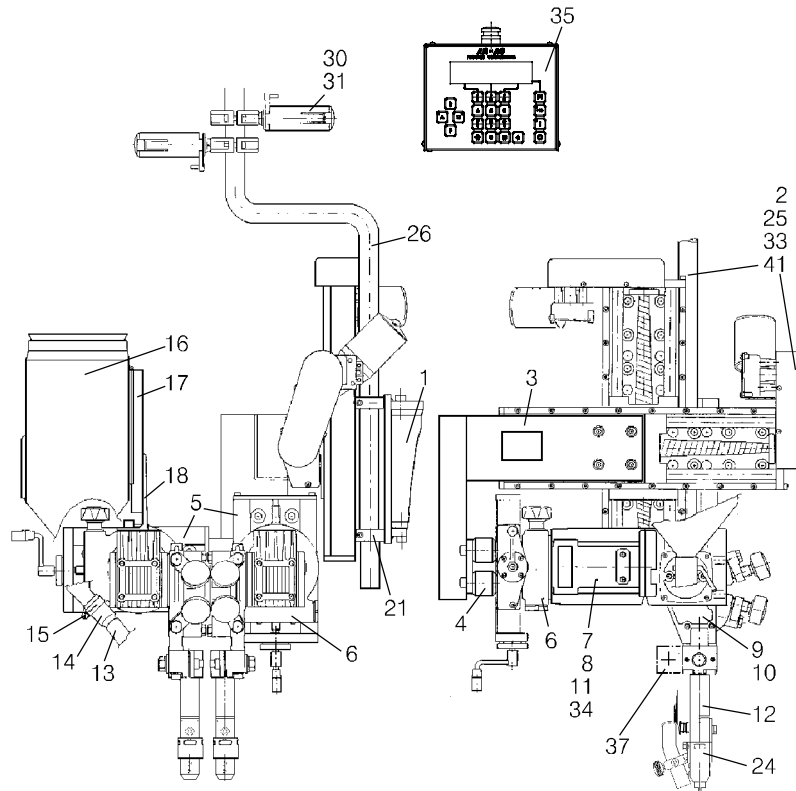
Item no.	Qty	Ordering no.	Denomination	Notes
		0457720883	Automatic welding machine without PEH	A6 SFE2
1	1	0334549880	Swivel bracket	
3	1	0334557880	Mounting bracket	
4	8	0278300180	Insulator	
5	2	0154465880	Slide manually operated	L = 90
6	2	0671171580	Angular slide	
7	1	0145063906	Motor with gear	A6 VEC (156:1), see separate manual
8	1	0145063896	Motor with gear	A6 VEC (156:1), see separate manual
9	1	0147639880	Wire straightener (right mounted)	
10	1	0147639880	Wire straightener (right mounted)	
11	2	0218810183	Insulated hand wheel	
12	2	0334290880	Contact Equipment	D35 / L220
13		0333645880	Flux hose	L = 1,000
34	2	0456490882	Motor cable	3 m
37	2	0456504883	Cable (arc voltage)	3 m
80	1	0457713001	Bar	



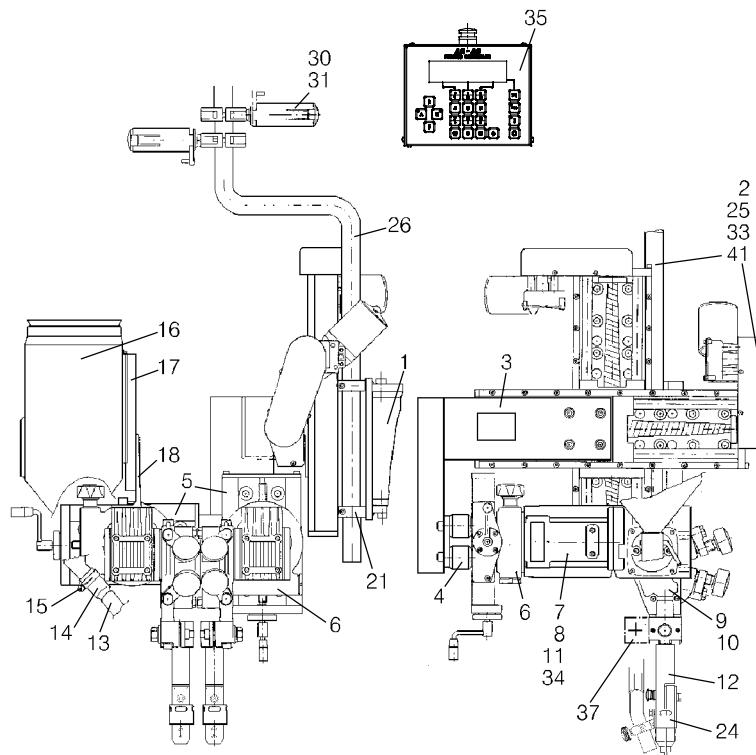
Item no.	Qty	Ordering no.	Denomination	Notes
		0457720884	Automatic welding machine without PEH	A6 SFE2
1	1	0334549880	Swivel bracket	
3	1	0334557880	Mounting bracket	
4	8	0278300180	Insulator	
5	2	0154465880	Slide manually operated	L = 90
6	2	0671171580	Angular slide	
7	1	0145063906	Motor with gear	A6 VEC (156:1), see separate manual
8	1	0145063896	Motor with gear	A6 VEC (156:1), see separate manual
9	1	0147639880	Wire straightener (right mounted)	
10	1	0147639880	Wire straightener (right mounted)	
11	2	0218810183	Insulated hand wheel	
12	2	0334290880	Contact Equipment	D35 / L220
13		0333645880	Flux hose	L = 1,000
14	1	0153491001	Branching Tube	
16	1	0147649881	Flux hopper	10 l
17	1	0148487880	Holder	
18	1	0334294001	Bracket	
26	1	0334694001	Pipe bend	
27	4	0154734001	Brake hub lock	
30	2	0146967880	Brake hub	
34	2	0456490882	Motor cable	3 m
37	2	0456504883	Cable (arc voltage)	3 m
80	1	0457713001	Bar	



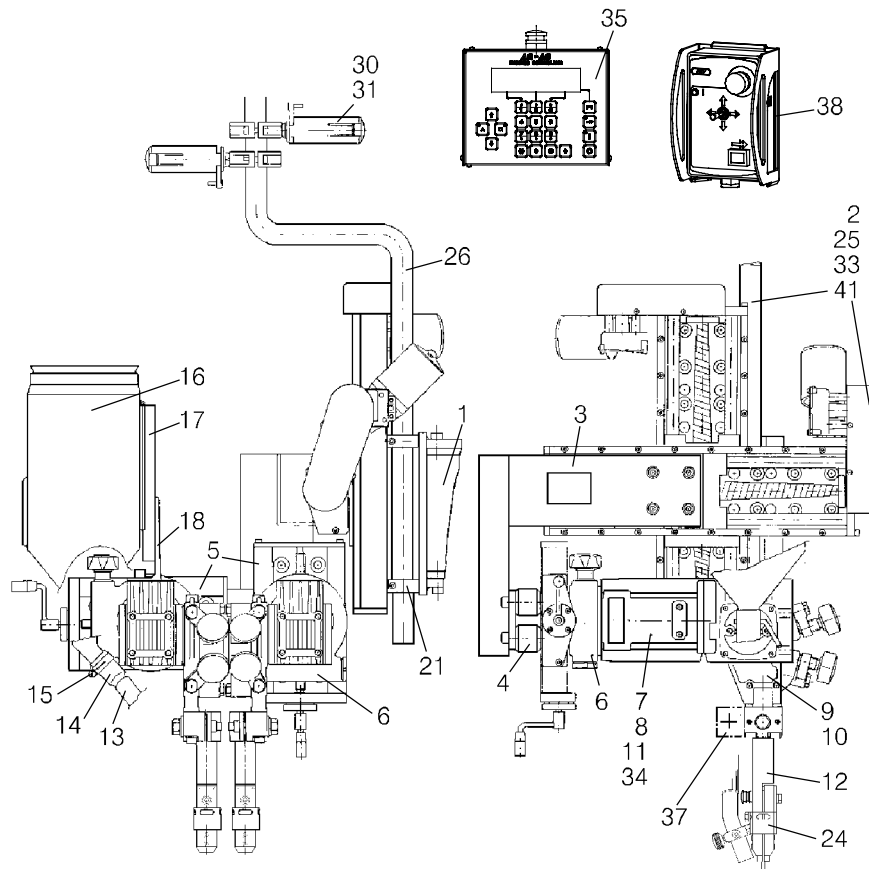
Item no.	Qty	Ordering no.	Denomination	Notes
		0457720885	Automatic welding machine with PEH	A6 SFE2
1	1	0334549880	Swivel bracket	
3	1	0334557880	Mounting bracket	
4	8	0278300180	Insulator	
5	2	0154465880	Slide manually operated	L = 90
6	2	0671171580	Circular slide	
7	1	0145063906	Motor with gear	A6 VEC (156:1), see separate manual
8	1	0145063896	Motor with gear	A6 VEC (156:1), see separate manual
9	1	0147639880	Wire straightener (right mounted)	
10	1	0147639880	Wire straightener (right mounted)	
11	2	0218810183	Insulated hand wheel	
12	2	0334290880	Contact Equipment	D35 / L220
13		0333645880	Flux hose	L = 1,000
14	1	0153491001	Branching Tube	
16	1	0147649881	Flux hopper	10 l
17	1	0148487880	Holder	
18	1	0334294001	Bracket	
26	1	0334694001	Pipe bend	
27	4	0154734001	Brake hub lock	
30	2	0146967880	Brake hub	
34	2	0456490882	Motor cable	3 m
35	2	0443741880	Control box	PEH, see separate manual
37	2	0456504883	Cable (arc voltage)	3 m
80	1	0457713001	Bar	



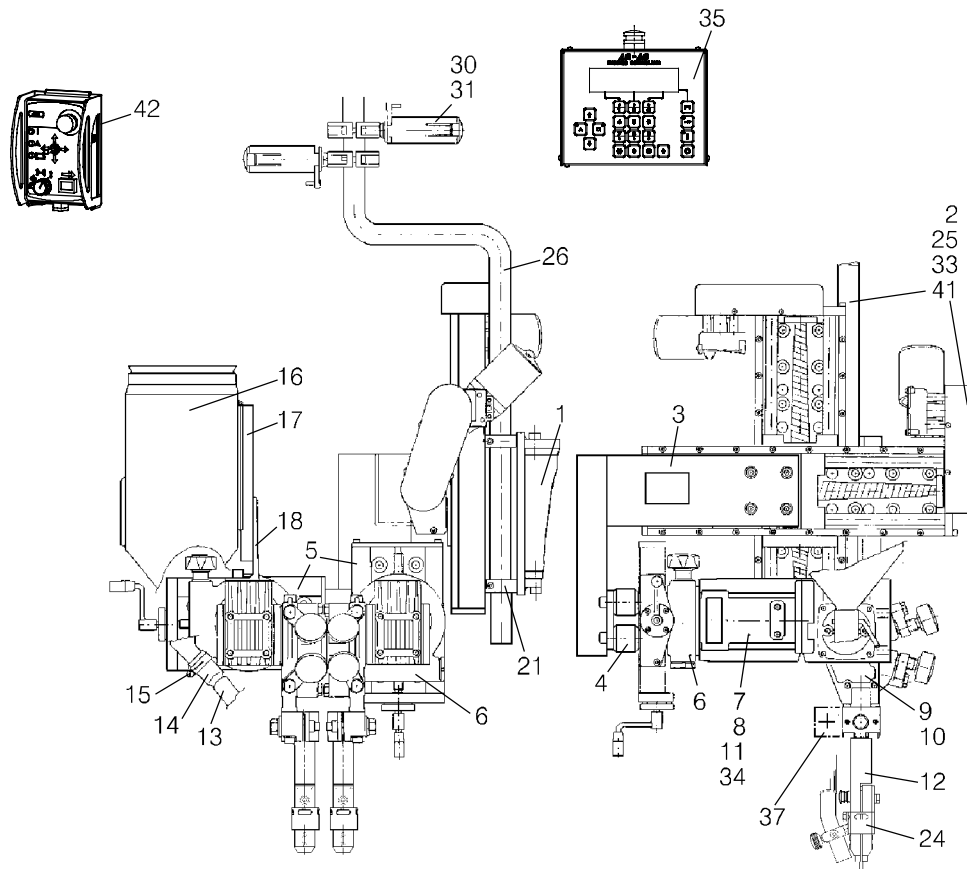
Item no.	Qty	Ordering no.	Denomination	Notes
		0457720887	Automatic welding machine with PEH	A6 SFE2
1	1	0334549880	Swivel bracket	
3	1	0334557880	Mounting bracket	
4	8	0278300180	Insulator	
5	2	0154465880	Slide manually operated	L = 90
6	2	0671171580	Circular slide	
7	1	0145063906	Motor with gear	A6 VEC (156:1), see separate manual
8	1	0145063896	Motor with gear	A6 VEC (156:1), see separate manual
9	1	0147639880	Wire straightener (right mounted)	
10	1	0147639880	Wire straightener (right mounted)	
11	2	0218810183	Insulated hand wheel	
12	2	0334290880	Contact Equipment	D35 / L220
13		0333645880	Flux hose	L = 1,000
14	1	0153491001	Branching Tube	
16	1	0147649881	Flux hopper	10 l
17	1	0148487880	Holder	
18	1	0334294001	Bracket	
26	1	0334694001	Pipe bend	
27	4	0154734001	Brake hub lock	
30	2	0146967880	Brake hub	
34	2	0456490882	Motor cable	3 m
35	2	0443741880	Control box	PEH, see separate manual
37	2	0456504883	Cable (arc voltage)	3 m
41	2	0154465881	Slide manually operated	L = 210
80	1	0457713001	Bar	



Item no.	Qty	Ordering no.	Denomination	Notes
		0457720889	Automatic welding machine with PEH and A6 PAV	A6 SFE2
1	1	0334549880	Swivel Bracket	
2	2	0334333884	Motorised Slide	A6 Slide (L=300), see separate manual
3	1	0334557880	Mounting bracket	
4	8	0278300180	Insulator	200 V
5	2	0154465880	Slide manually operated	L = 90
6	2	0671171580	Angular slide	
7	1	0145063906	Motor with gear	A6 VEC (156:1), see separate manual
8	1	0145063896	Motor with gear	A6 VEC (156:1), see separate manual
9	1	0147639880	Wire straightener (right mounted)	
10	1	0147639880	Wire straightener (right mounted)	
11	2	0218810183	Insulated hand wheel	
12	2	0334290880	Contact Equipment	D35 / L220
33	2	0460745880	Motor cable	2 m
34	2	0456490882	Motor cable	3 m
35	2	0443741880	Control box	PEH, see separate manual
37	2	0456504883	Cable (arc voltage)	3 m
38	1	0460697880	Control system for motorised slides	A6 PAV, see separate manual
80	1	0457713001	Bar	

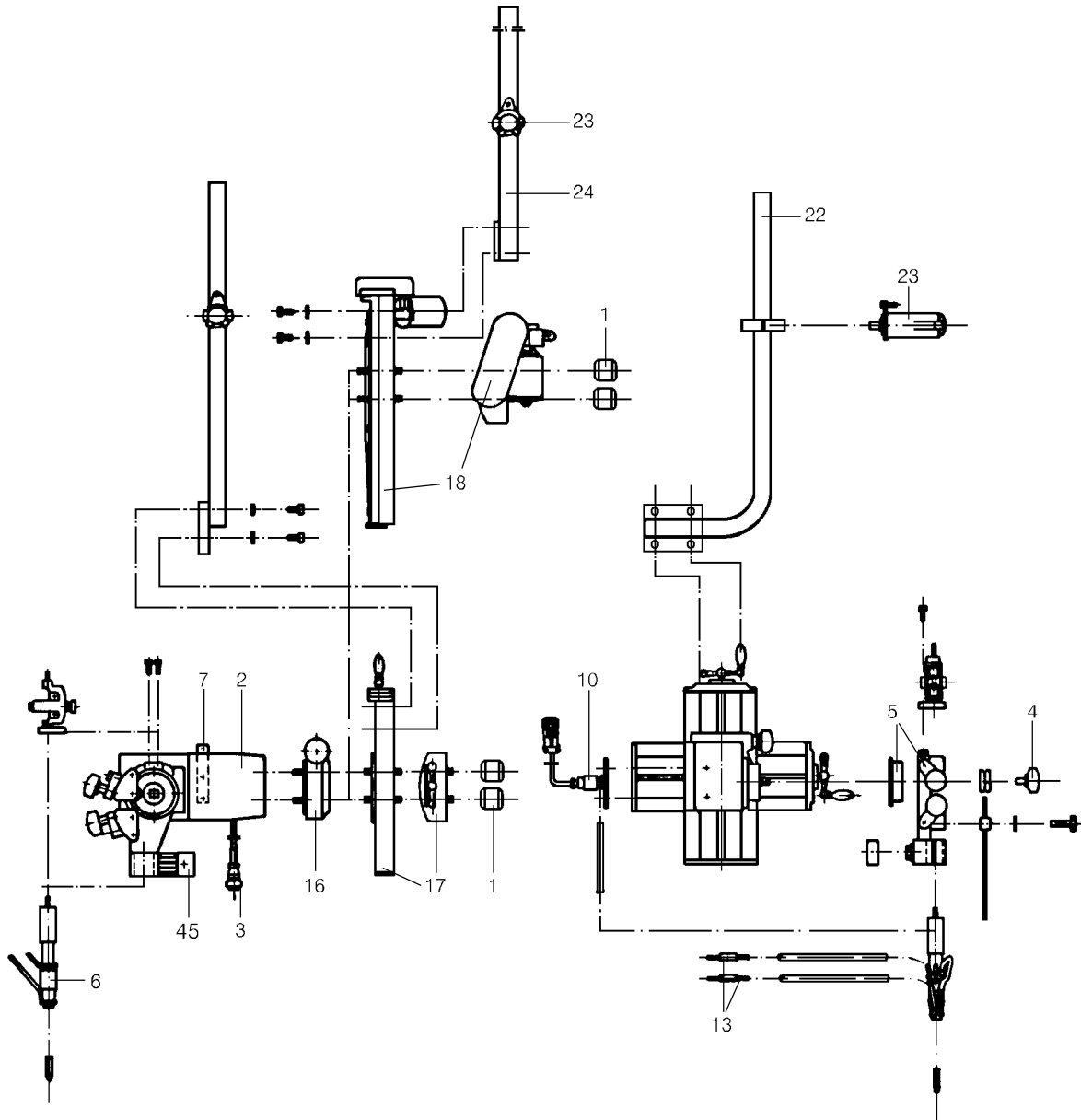


Item no.	Qty	Ordering no.	Denomination	Notes
		0457720891	Automatic welding machine with PEH, A6 GMH	A6 SFE2
1	1	0334549880	Swivel bracket	
2	2	0334333884	Motorised Slide	A6 Slide (L=300), see separate manual
3	1	0334557880	Mounting bracket	
4	8	0278300180	Insulator	200 V
5	2	0154465880	Slide manually operated	L = 90
6	2	0671171580	Angular slide	
7	1	0145063906	Motor with gear	A6 VEC (156:1), see separate manual
8	1	0145063896	Motor with gear	A6 VEC (156:1), see separate manual
9	1	0147639880	Wire straightener (right mounted)	
10	1	0147639880	Wire straightener (right mounted)	
11	2	0218810183	Insulated hand wheel	
12	2	0334290880	Contact Equipment	D35 / L220
33	2	0460745880	Motor cable	2 m
34	2	0456490882	Motor cable	3 m
35	2	0443741880	Control box	PEH, see separate manual
37	2	0456504883	Cable (arc voltage)	3 m
42	1	0460884880	Joint tracking equipment	A6 GMH, see separate manual
80	1	0457713001	Bar	



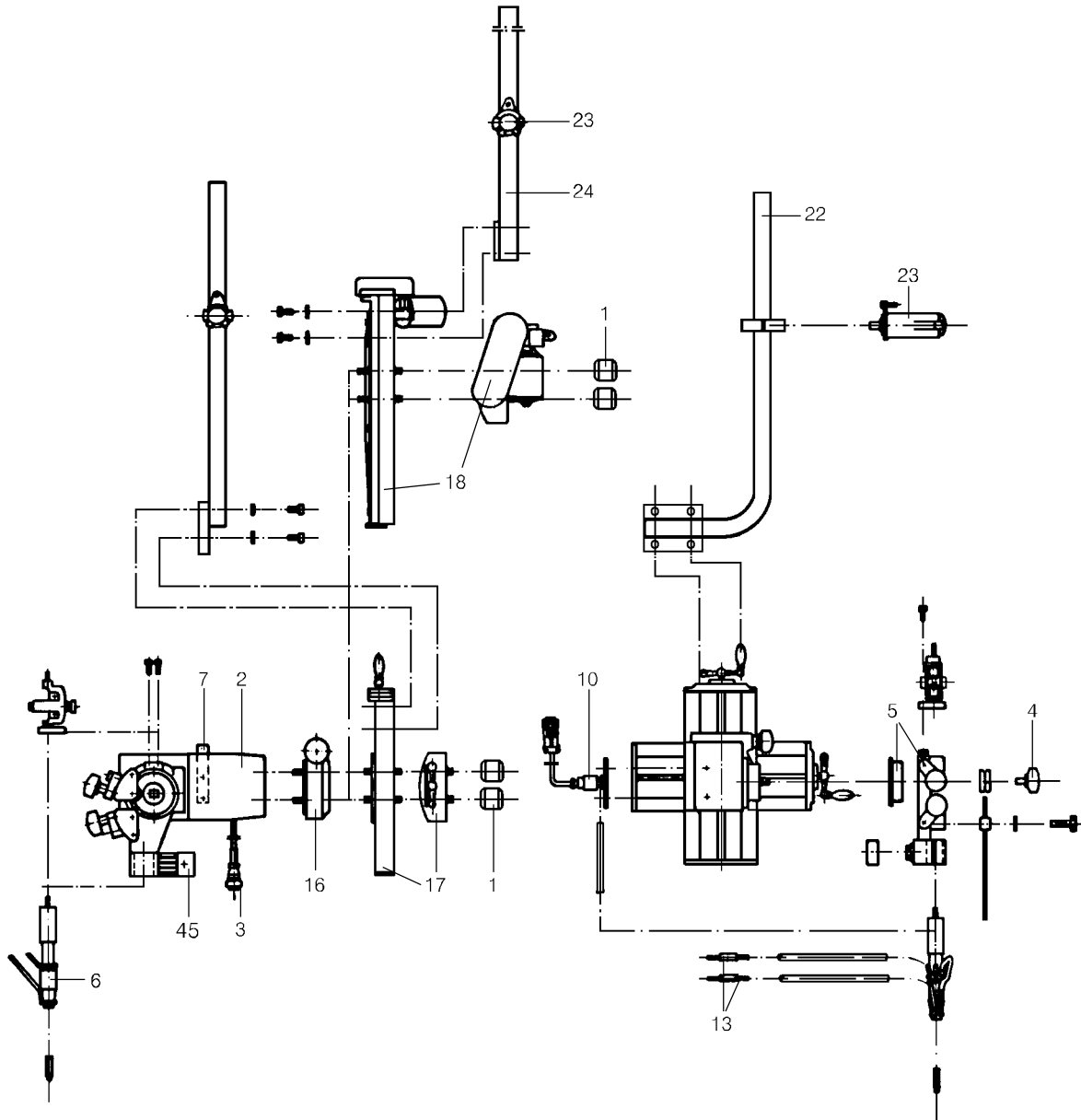
Item no.	Qty	Ordering no.	Denomination	Notes
		0456563880	Automatic welding machine without PEH	A6 SGE1
2	1	0145063909	Motor with gear	A6 VEC (76:1), see separate manual
3	1	0456490882	Cable	L= 3 m
4	1	0218810183	Handwheel	
5	1	0147639880	Wire straightener (right)	
6	1	0030465385	Connector	D35
7	1	0148493001	Cable holder	
10	1	0456494882	Solenoid valve with cable	
13	2	0147336880	Hose connection	
45	1	0456504883	Cable (arc voltage)	3.0 m
80	1	0457713001	Bar	
		0456563881	Automatic welding machine without PEH	A6 SGE1
2	1	0145063909	Motor with gear	A6 VEC (76:1), see separate manual
3	1	0456490882	Cable	L= 3 m
4	1	0218810183	Handwheel	
5	1	0147639880	Wire straightener (right)	
6	1	0030465385	Connector	D35
7	1	0148493001	Cable holder	
10	1	0456494882	Solenoid valve with cable	
13	2	0147336880	Hose connection	
22	1	0147328880	Reel holder (bent)	
23	1	0146967880	Brake hub	
45	1	0456504883	Cable (arc voltage)	3.0 m
80	1	0457713001	Bar	
		0456563882	Automatic welding machine without PEH	A6 SGE1
2	1	0145063909	Motor with gear	A6 VEC (76:1), see separate manual
3	1	0456490882	Cable	L= 3 m
4	1	0218810183	Handwheel	
5	1	0147639880	Wire straightener (right)	
6	1	0030465385	Connector	D35
7	1	0148493001	Cable holder	
10	1	0456494882	Solenoid valve with cable	
13	2	0147336880	Hose connection	
23	1	0146967880	Brake hub	
24	1	0334318880	Reel holder, straight	
45	1	0456504883	Cable (arc voltage)	3.0 m
80	1	0457713001	Bar	
		0456563883	Automatic welding machine without PEH	A6 SGE1
1	4	0278300180	Insulator	2000 V
2	1	0145063909	Motor with gear	A6 VEC (76:1), see separate manual
3	1	0456490882	Cable	L= 3 m
4	1	0218810183	Handwheel	
5	1	0147639880	Wire straightener (right)	
6	1	0030465385	Connector	D35

Item no.	Qty	Ordering no.	Denomination	Notes
7	1	0148493001	Cable holder	
10	1	0456494882	Solenoid valve with cable	
13	2	0147336880	Hose connection	
16	1	0671171580	Angular slide	
17	2	0154465881	Slide, manually operated	L=210
45	1	0456504883	Cable (arc voltage)	3.0 m
80	1	0457713001	Bar	

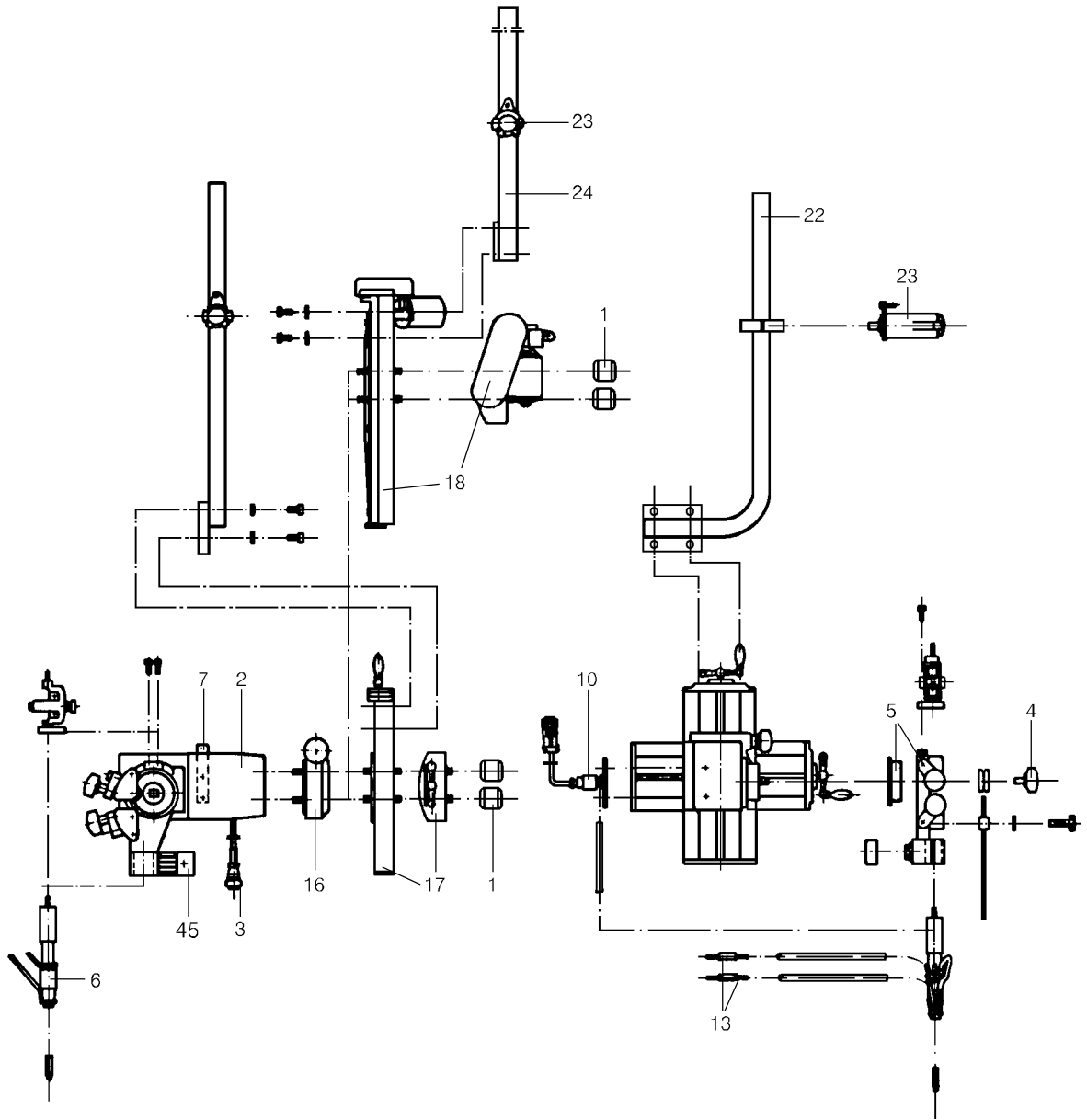


Item no.	Qty	Ordering no.	Denomination	Notes
		0456563884	Automatic welding machine without PEH	A6 SGE1
1	4	0278300180	Insulator	2000 V
2	1	0145063909	Motor with gear	A6 VEC (76:1), see separate manual
3	1	0456490882	Cable	L= 3 m
4	1	0218810183	Handwheel	
5	1	0147639880	Wire straightener (right)	
6	1	0030465385	Connector	D35
7	1	0148493001	Cable holder	
10	1	0456494882	Solenoid valve with cable	
13	2	0147336880	Hose connection	
16	1	0671171580	Angular slide	
17	2	0154465881	Slide, manually operated	L=210
22	1	0443510880	Reel holder (bent)	
23	1	0146967880	Brake hub	
45	1	0456504883	Cable (arc voltage)	3.0 m
80	1	0457713001	Bar	
		0456563885	Automatic welding machine without PEH	A6 SGE1
1	4	0278300180	Insulator	2000 V
2	1	0145063909	Motor with gear	A6 VEC (76:1), see separate manual
3	1	0456490882	Cable	L= 3 m
4	1	0218810183	Handwheel	
5	1	0147639880	Wire straightener	Right
6	1	0030465385	Connector	D35
7	1	0148493001	Cable holder	
10	1	0456494882	Solenoid valve with cable	
13	2	0147336880	Hose connection	
16	1	0671171580	Angular slide	
18	2	0334333884	Motorised slides	A6 Slide (L=300), see separate manual
45	1	0456504883	Cable (arc voltage)	3.0 m
80	1	0457713001	Bar	
		0456563886	Automatic welding machine without PEH	A6 SGE1
1	4	0278300180	Insulator	2000 V
2	1	0145063909	Motor with gear	A6 VEC (76:1), see separate manual
3	1	0456490882	Cable	L= 3 m
4	1	0218810183	Handwheel	
5	1	0147639880	Wire straightener	Right
6	1	0030465385	Connector	D35
7	1	0148493001	Cable holder	
10	1	0456494882	Solenoid valve with cable	
13	2	0147336880	Hose connection	
16	1	0671171580	Angular slide	
18	2	0334333884	Motorised slides	A6 Slide (L=300), see separate manual
23	1	0146967880	Brake hub	
24	1	0334318880	Reel holder, straight	

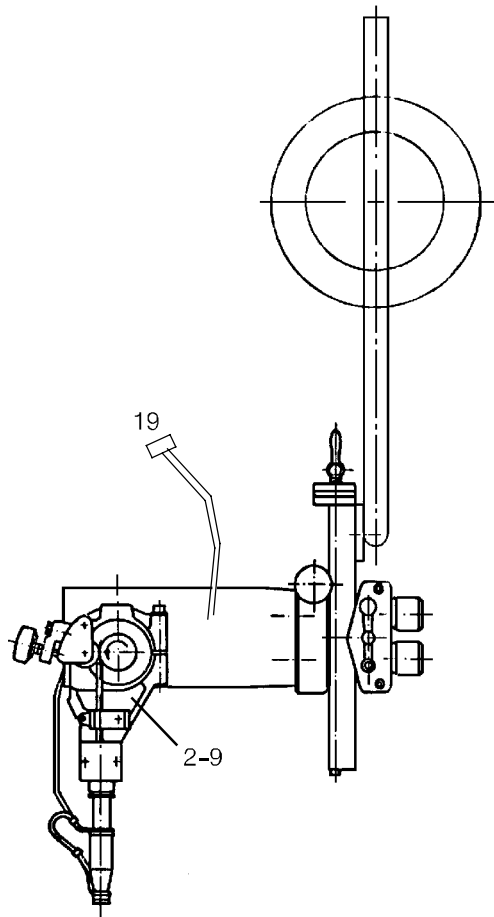
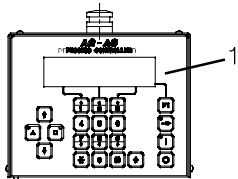
Item no.	Qty	Ordering no.	Denomination	Notes
45	1	0456504883	Cable (arc voltage)	3.0 m
80	1	0457713001	Bar	



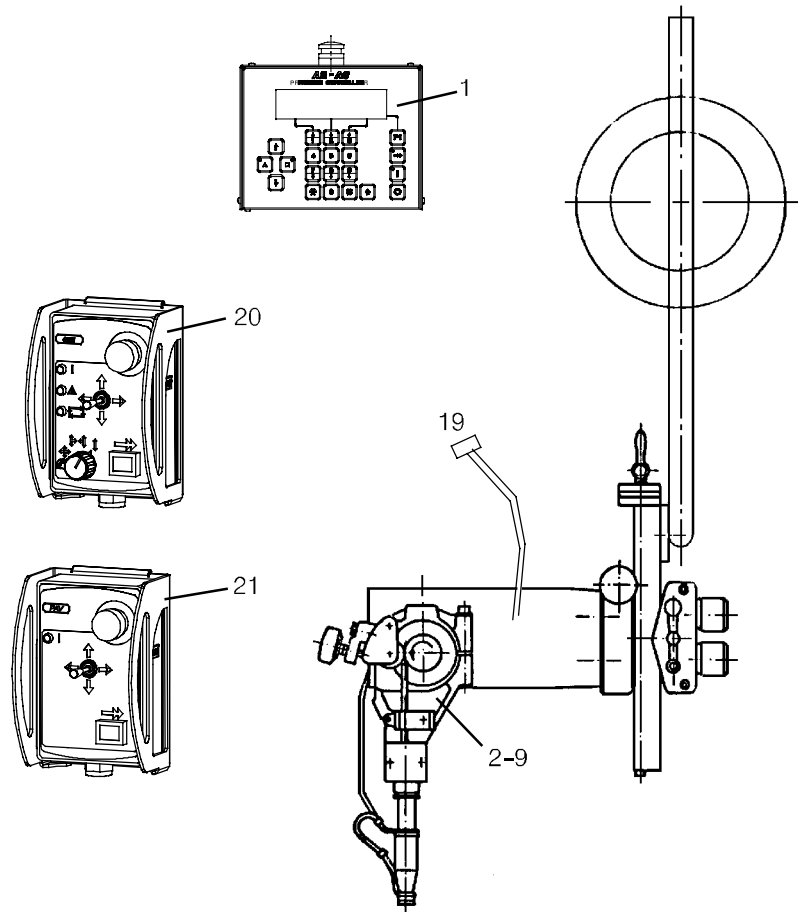
Item no.	Qty	Ordering no.	Denomination	Notes
		0456563887	Automatic welding machine without PEH	A6 SGE1
1	4	0278300180	Insulator	2000 V
2	1	0145063909	Motor with gear	A6 VEC (76:1), see separate manual
3	1	0456490882	Cable	L= 3 m
4	1	0218810183	Handwheel	
5	1	0147639880	Wire straightener	Right
6	1	0030465385	Connector	D35
7	1	0148493001	Cable holder	
10	1	0456494882	Solenoid valve with cable	
13	2	0147336880	Hose connection	
16	1	0671171580	Angular slide	
18	2	0334333884	Motorised slides	A6 Slide (L=300), see separate manual
45	1	0456504883	Cable (arc voltage)	3.0 m
80	1	0457713001	Bar	
		0456563888	Automatic welding machine without PEH	A6 SGE1
1	4	0278300180	Insulator	2000 V
2	1	0145063909	Motor with gear	A6 VEC (76:1), see separate manual
3	1	0456490882	Cable	L= 3 m
4	1	0218810183	Handwheel	
5	1	0147639880	Wire straightener	Right
6	1	0030465385	Connector	D35
7	1	0148493001	Cable holder	
10	1	0456494882	Solenoid valve with cable	
13	2	0147336880	Hose connection	
16	1	0671171580	Angular slide	
18	2	0334333884	Motorised slides	A6 Slide (L=300), see separate manual
23	1	0146967880	Brake hub	
24	1	0334318880	Reel holder, straight	
45	1	0456504883	Cable (arc voltage)	3.0 m
80	1	0457713001	Bar	



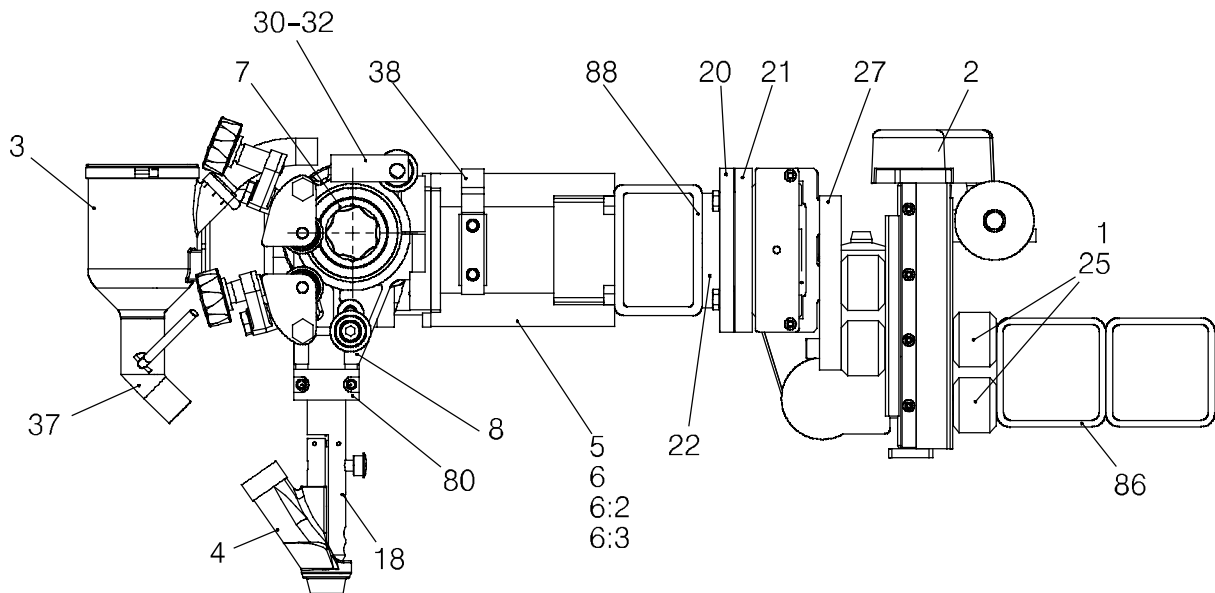
Item no.	Qty	Ordering no.	Denomination	Notes
1	1	0456 564 880 0443741880	Automatic welding machine with PEH Control box	A6 SGE1 PEH, see separate manual
2	1	0456563881	Automatic welding machine without PEH	
1	1	0456 564 881 0443741880	Automatic welding machine with PEH Control box	A6 SGE1 PEH, see separate manual
3	1	0456563882	Automatic welding machine without PEH	
1	1	0456 564 882 0443741880	Automatic welding machine with PEH Control box	A6 SGE1 PEH, see separate manual
4	1	0456563883	Automatic welding machine without PEH	
1	1	0456 564 883 0443741880	Automatic welding machine with PEH Control box	A6 SGE1 PEH, see separate manual
5	1	0456563884	Automatic welding machine without PEH	



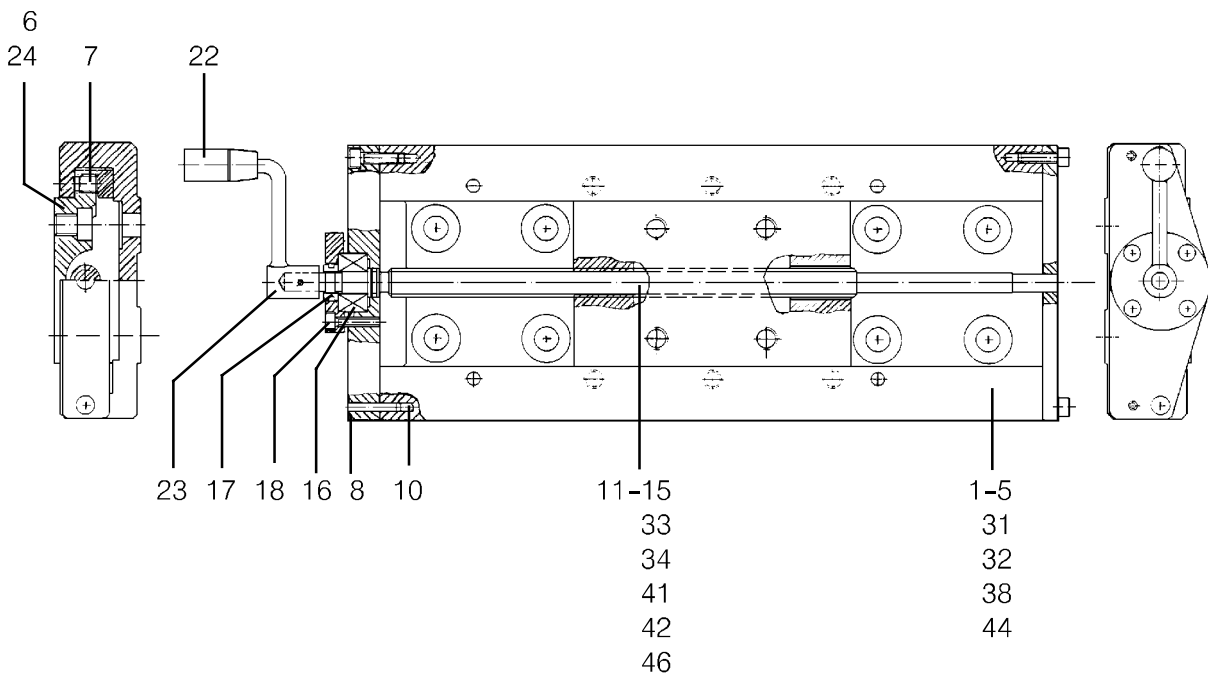
Item no.	Qty	Ordering no.	Denomination	Notes
1	1	0456 564 884 0443741880	Automatic welding machine with PEH and A6 PAV Control box	A6 SGE1 PEH, see separate manual
6	1	0456563885	Automatic welding machine without PEH	
19	2	0460745880	Motor cable	2.0 m
20	1	0460697880	Control system for motorised slides	A6 PAV, see separate manual
1	1	0456 564 885 0443741880	Automatic welding machine with PEH and A6 PAV Control box	A6 SGE1 PEH, see separate manual
7	1	0456563886	Automatic welding machine without PEH	
19	2	0460745880	Motor cable	2.0 m
20	1	0460697880	Control system for motorised slides	A6 PAV, see separate manual
1	1	0456 564 886 0443741880	Automatic welding machine with PEH and A6 GMH Control box	A6 SGE1 PEH, see separate manual
8	1	0456563887	Automatic welding machine without PEH	
19	2	0460745880	Motor cable	2.0 m
21	1	0460884880	Joint-tracking equipment	A6 GMH, see separate manual
1	1	0456 564 887 0443741880	Automatic welding machine with PEH and A6 GMH Control box	A6 SGE1 PEH, see separate manual
9	1	0456563888	Automatic welding machine without PEH	
19	2	0460745880	Motor cable	2.0 m
21	1	0460884880	Joint-tracking equipment	A6 GMH, see separate manual



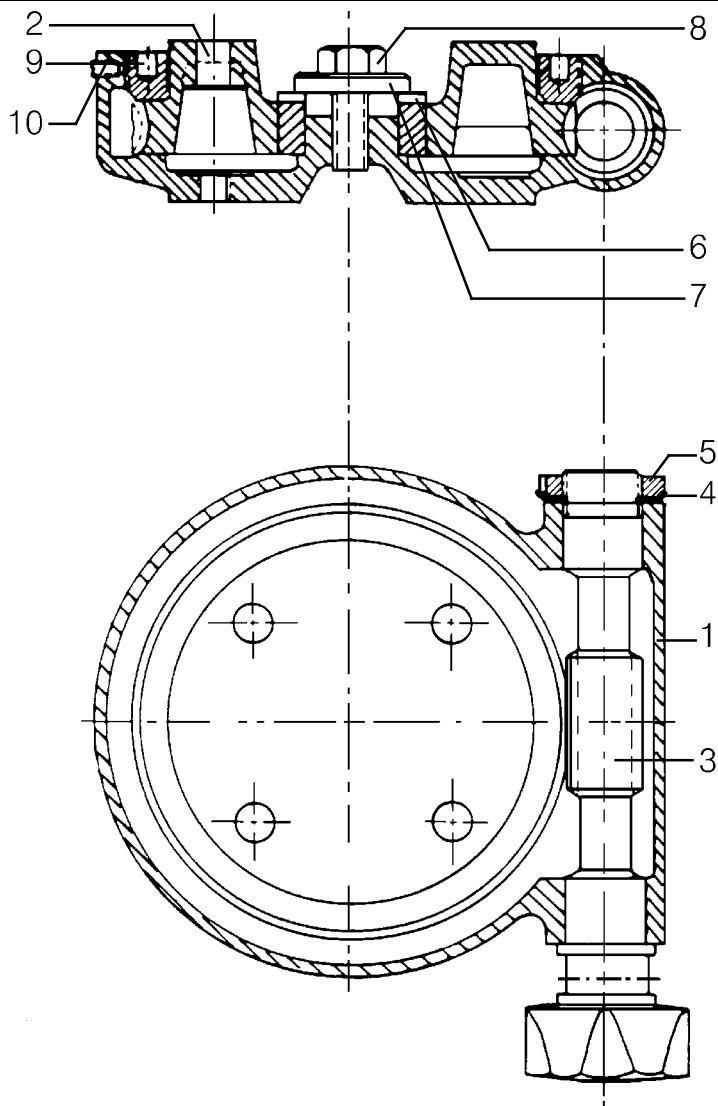
Item no.	Qty	Ordering no.	Denomination	Notes
		0416967880	Automatic welding machine	A6 Compact 500 (A6-SFE1C)
1	8	0278300180	Insulator	2000 V.
2	2	0334333880	Motorised slide	A6 Slide (l=60), see separate manual
3	1	0153856884	Flux hopper with flux valve	1 l
4	1	0254900880	Flux funnel	
5	1	0145063896	Motor with gear	A6 VEC (4000rpm, 156:1), see separate manual
6	1	0449253882	Cable unit	L =5
6:2	1	0456490883	Motor cable	5.0m
63	1	0456504884	Cable (arc-voltage)	5m
7	1	0218810183	Insulated hand wheel	
8	1	0147639889	Wire straightener (right mounted)	D35
18	1	0417959886	Contact device	hd l=180
20	1	0334170001	Clamping ring	
21	1	0334171001	Plate	
22	1	0334172001	Gear bracket	
25	4	0212204527	Stop screw	SK6SS
27	1	0411408001	Mounting plate	
30	1	0416955001	Attachment for roller	
31	1	0153148880	Pressure roller	
32	1	0332411880	Stub shaft with washer	
37		0443383001	Flux hose	d32/25
38	1	0416957001	Wire conduit mount	
80	1	0457713001	Bar	
86	1	0806265880	Bracket	
88	1	0811053001	Bracket	



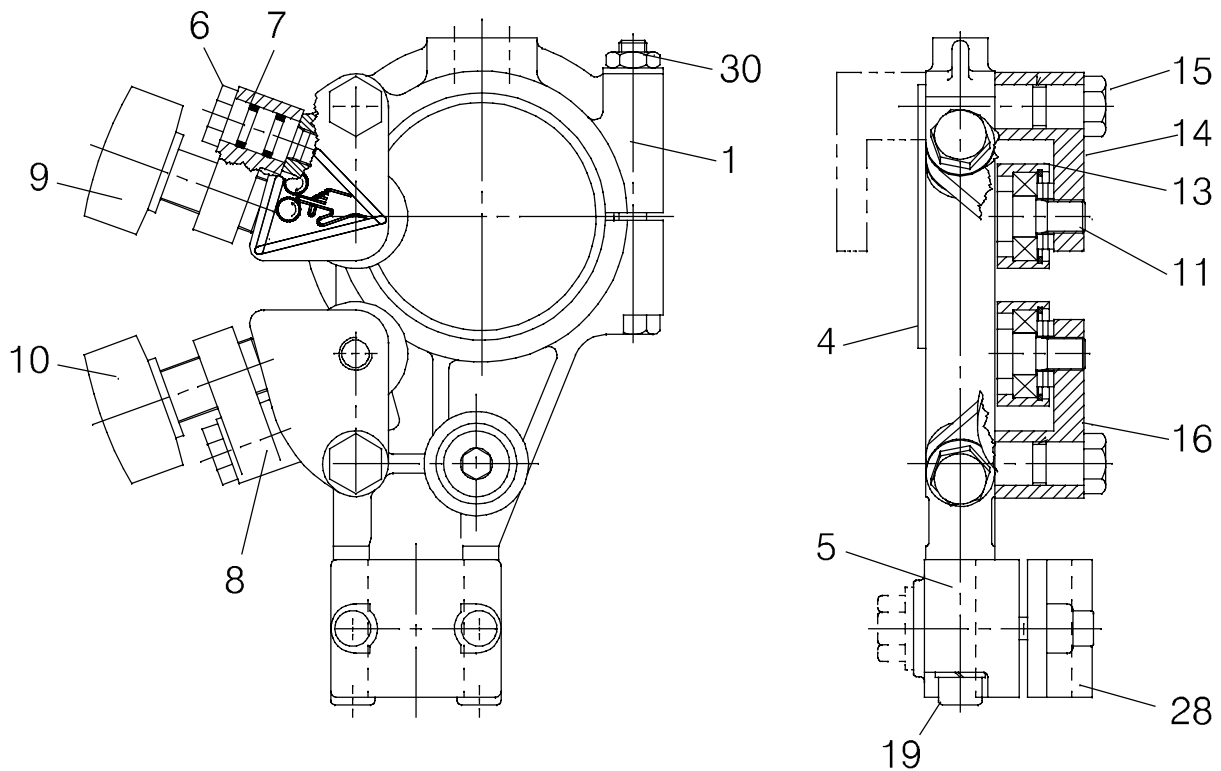
Item	Qty	Orderingno.	Denomination	Remarks
		0154465880	Slide, manually operated	
1	1	0154464001	Slide frame	
6	1	0154463880	Carriage with slide rails	
7	6	0190509485	Stop screw	M10x10
8	1	0154458001	End piece	
10	2	0211102957	Roll pin	D5x20
11	1	0154461001	Lead screw	
16	1	0190531201	Ball bearing	SKF 3201
17	1	0154456001	Locknut	
18	1	0154457001	Ball bearing cap	
22	1	0334537001	Crank	
23	1	0211102938	Roll pin	D3x20
		0154 465881	Slide, manually operated	
2	1	0154464002	Slide frame	
6	1	0154463880	Carriage with slide rails	
7	6	0190509485	Stop screw	M10x10
8	1	0154458001	End piece	
10	2	0211102957	Roll pin	D5x20
12	1	0154461002	Lead screw	
16	1	0190531201	Ball bearing	SKF 3201
17	1	0154456001	Locknut	
18	1	0154457001	Ball bearing cap	
22	1	0334537001	Crank	
23	1	0211102938	Roll pin	D3x20



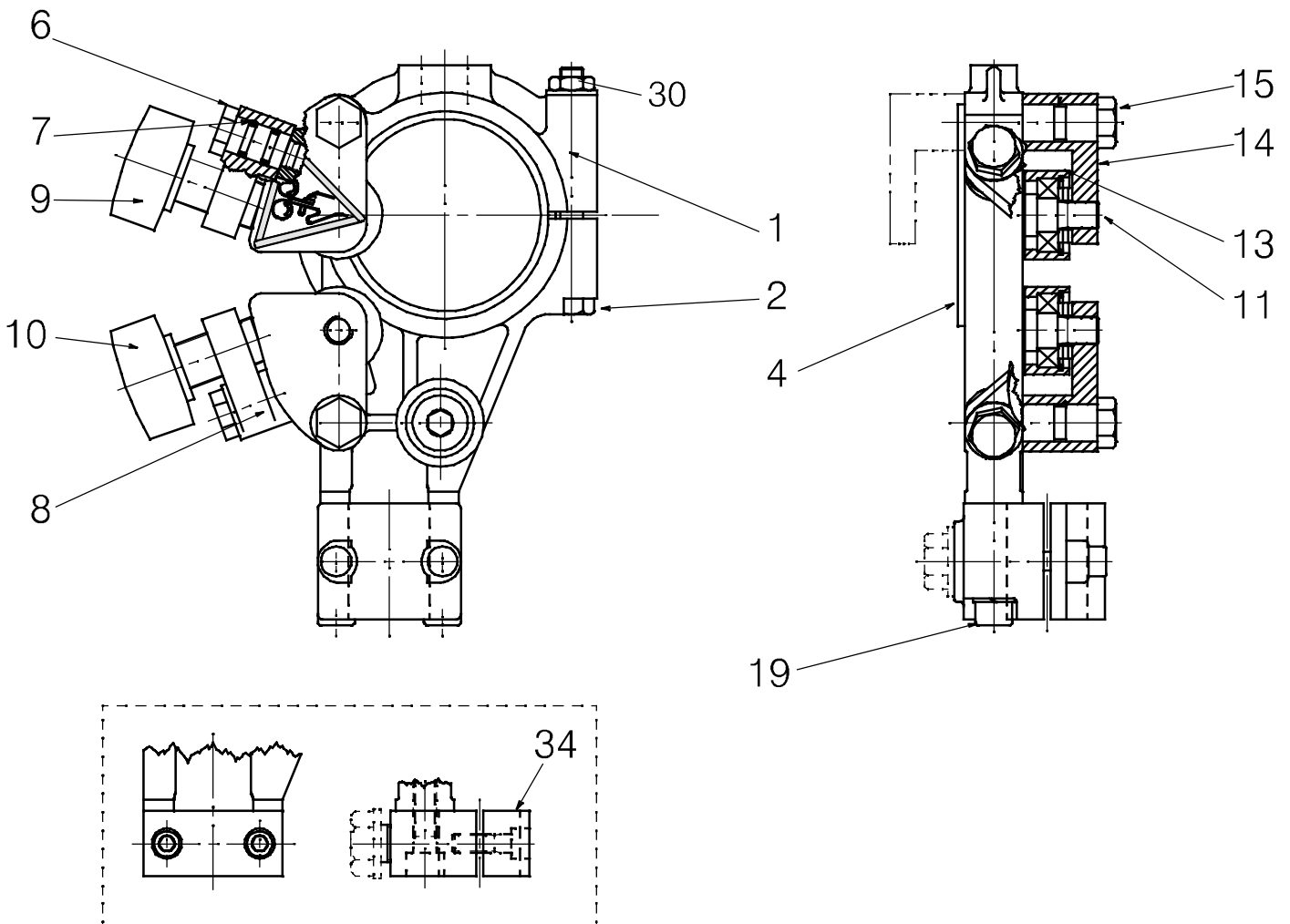
Item	Qty	Orderingno.	Denomination	Remarks
		0671171580	Angular slide	
1	1	0232601901	Housing (casing)	
2	1	0232303101	Worm wheel	
3	1	0040644080	Worm screw	
4	1	0215401206	Locking washer	D25
5	1	0215401306	Nut	
6	1	0218522301	Eccentric bushing	
7	1	0215100204	Washer	D36/13x6
8	1	0212101628	Screw	M12x30
9	1	0212911101	Screw	
10	1	0212204346	Stop screw	M5x12



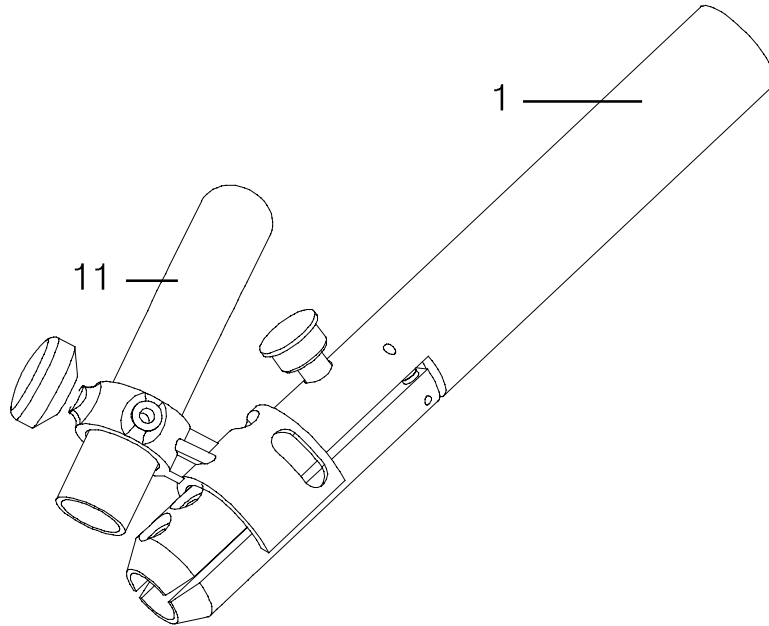
Item no.	Qty	Ordering no.	Denomination	Notes
		0147639880	Straightener (right mounted)	
1	1	0156449001	Clamp	
4	1	0215503601	Insulating sleeve	
5	1	0156530001	Clamp half	
6	2	0212900001	Spacer screw	
7	4	0215201209	O-ring	D11.3x2.4
8	2	0218400801	Pressure roller arm	
9	1	0218810181	Handwheel	
10	1	0218810182	Handwheel	
11	3	0332408001	Stub shaft	
13	3	0153148880	Roller	
14	1	0415498001	Thrust roller carrier	
15	2	0212902601	Spacer screw	
16	1	0415499001	Thrust roller carrier	
19	2	0219501013	Spring washer	D18.1/10.2
28	1	0156531001	Clamp half	
30	1	0212601110	Nut	M10



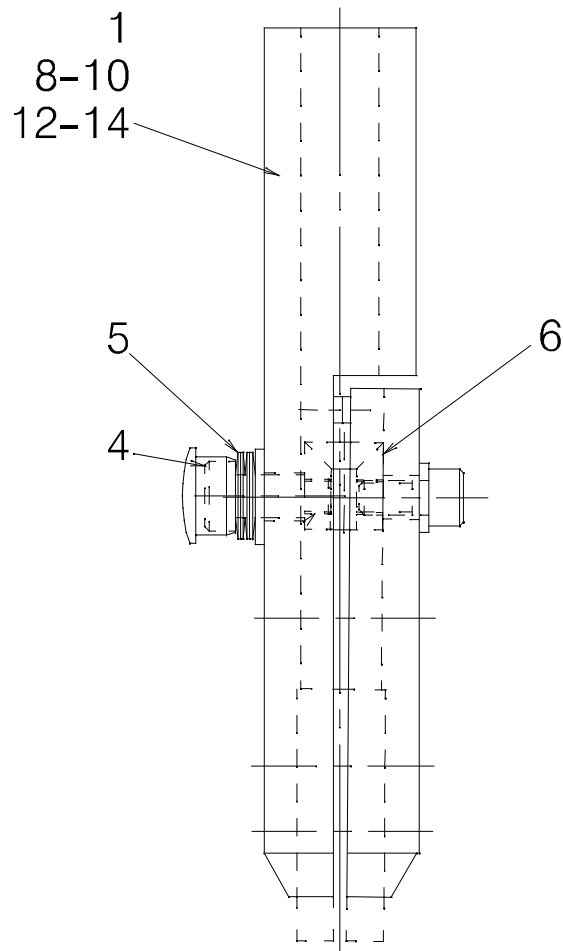
Item no.	Qty	Ordering no.	Denomination	Notes
		0147639889	Straightener (right mounted)	A6 S COMPACT 500 (A6 SFE1C)
1	1	0156449001	Clip	
4	1	0215503601	Insulating sleeve	
6	2	0212900001	Spacer screw	
7	4	0215201209	Oo-ring 11.3x2.4mm	11,3x2,4
8	2	0218400801	Pressure roller arm	
9	1	0218810181	Insulated hand wheel	
10	1	0218810182	Insulated hand wheel	
11	3	0332408001	Stub shaft	
13	3	0153148880	Roller	
14	1	0415498001	Thrust roller carrier	
15	2	0212902601	Spacer screw	
16	1	0415499001	Thrust roller carrier	a2/a6
19	2	0219501013	Spring washer	d18,1/10,2
30	1	0212601110	Nut	M10
34	1	0416956001	Contact clip	D 35



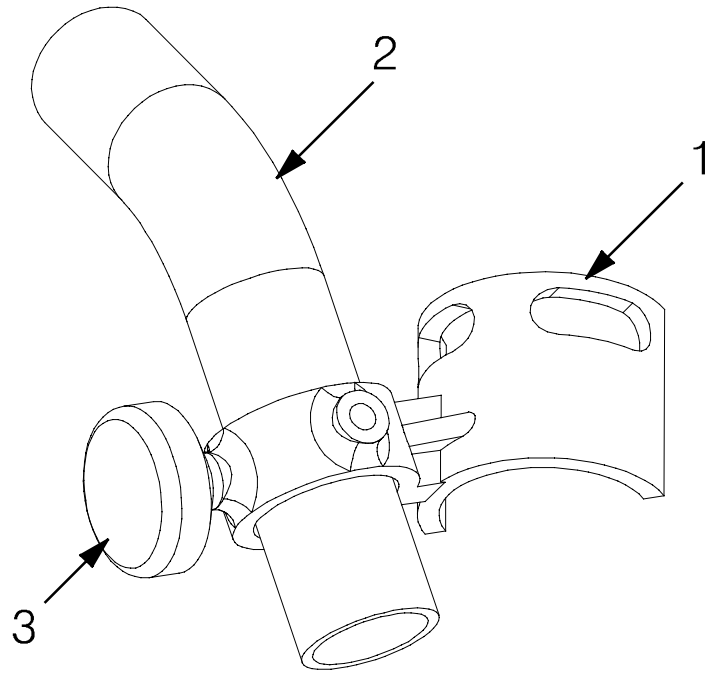
Item	Qty	Orderingno.	Denomination	Remarks
1	1	0334290-880	Contact equipment single wire	D35
		0417959880	Contact equipment	L=220
11	1	0153299880	Flux nozzle	



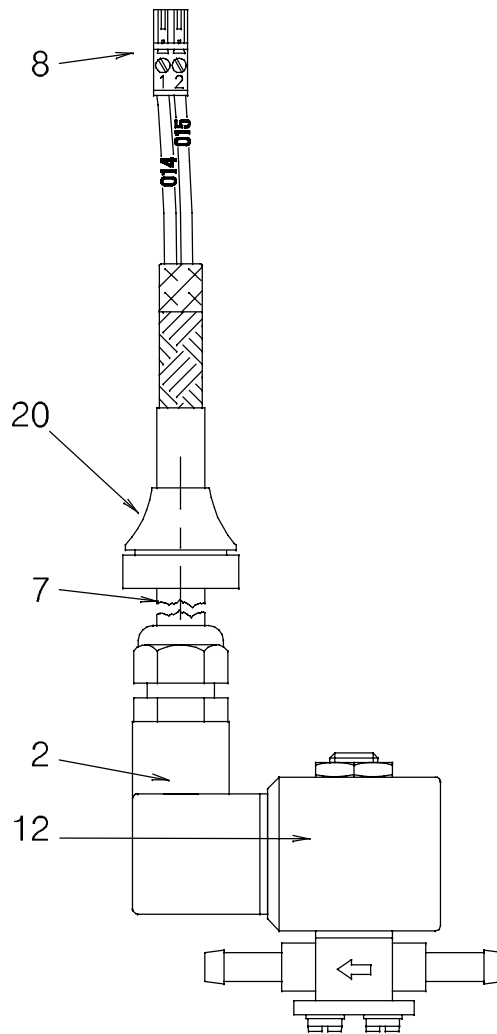
Item no.	Qty	Ordering no.	Denomination	Notes
		0417959880	Contact equipment	L=220mm
1	1	0443344880	Contact device	D35
4	1	0443372001	Fitting bolt	
5	4	0219504307	Beleville washer	d20/10.2
6	1	0417979001	Ring	
		0417959881	Contact equipment	L=275mm
4	1	0443372001	Fitting bolt	
5	4	0219504307	Beleville washer	d20/10.2
6	1	0417979001	Ring	
8	1	0443344881	Contact device	D35
		0417959886	Contact equipment	L=180
1	1	0443344885	Contact device	D35
4	1	0443372001	Fitting bolt	
5	4	0219504307	Beleville washer	d20/10.2
6	1	0417979001	Ring	



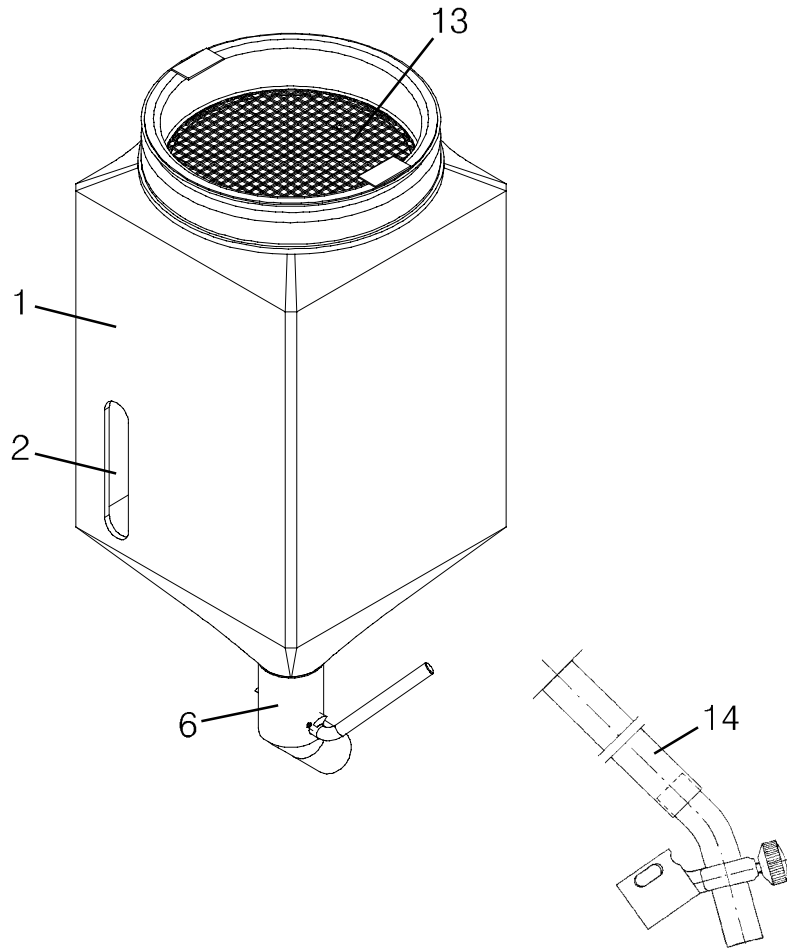
Item no.	Qty	Ordering no.	Denomination	Notes
		0153299880	Flux nozzle	
1	1	0153290002	Pipe holder	
2	1	0153296001	Pipe bend	
3	1	0153425001	Knob	



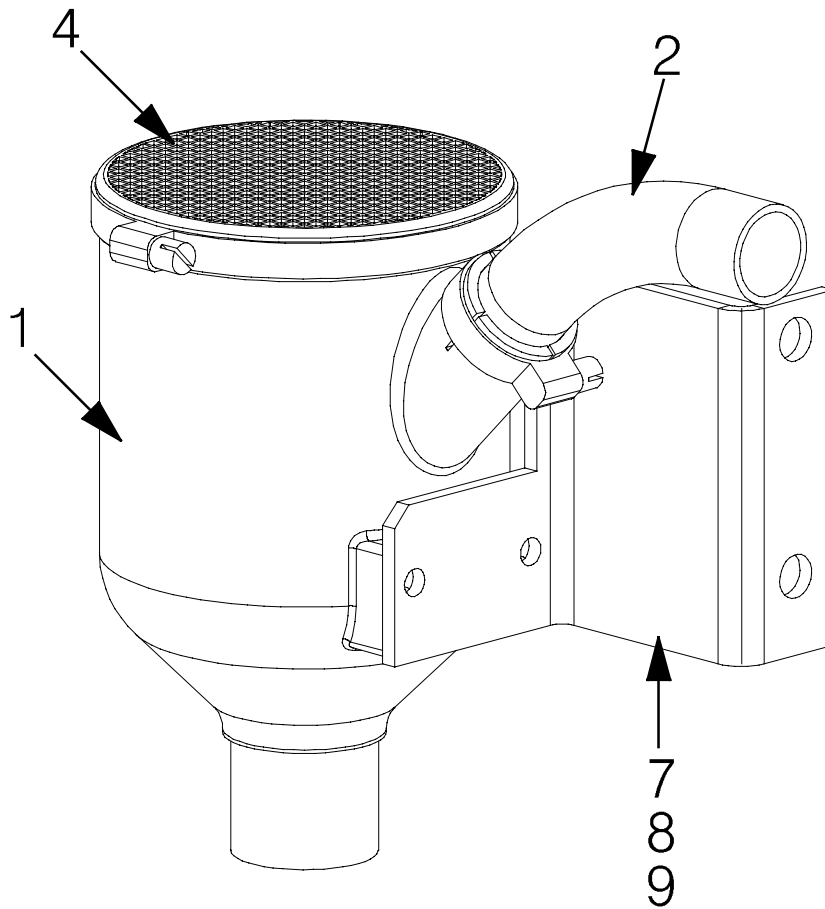
Item	Qty	Orderingno.	Denomination	Notes
		0456494882	Solenoid valve with cable	
2	1	0157259001	Contact	
7	2	0193021110	Cable, screened	ÖLFLEX, 2x1.5 mm ²
8	1	0456489001	PCB Connector, plug	
12	1	0193054002	Solenoid valve	42 V
20	1	0192645002	Bushing	



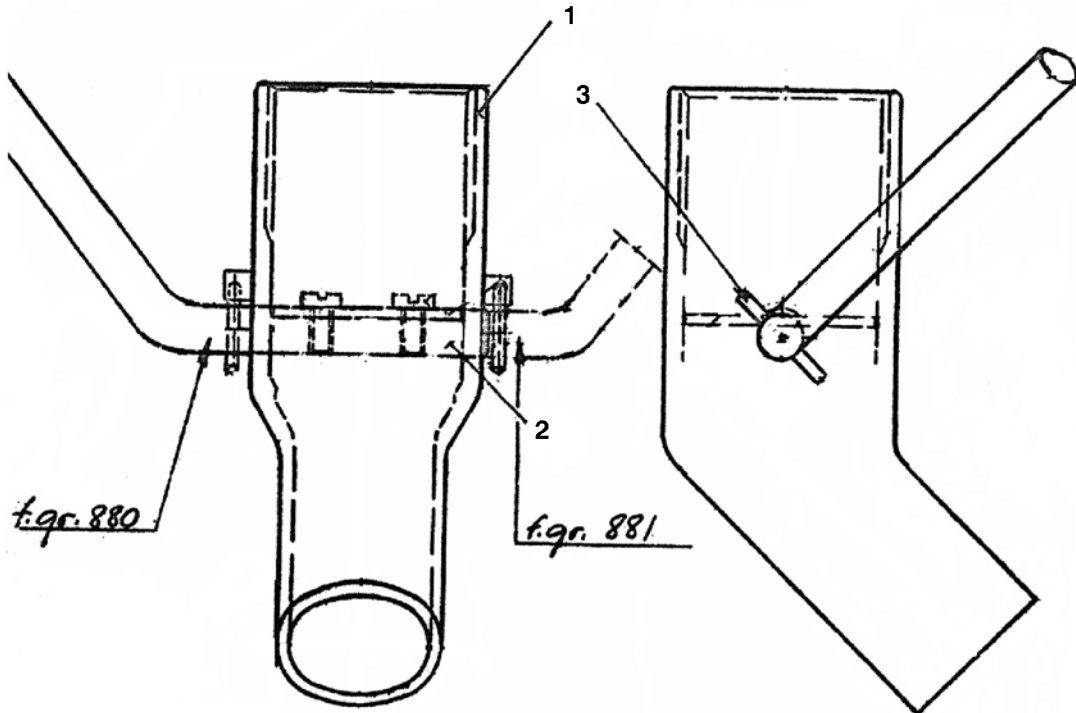
Item	Qty	Orderingno.	Denomination	Remarks
		0147649881	Flux hopper (complete)	10 l
1	1	0154007001	Hopper for flux	
2	1	0148837001	Window	
6	1	0153347880	Flux valve	
13	1	0020301780	Flux strainer	
14	1	0443383002	Flux hose	L=500



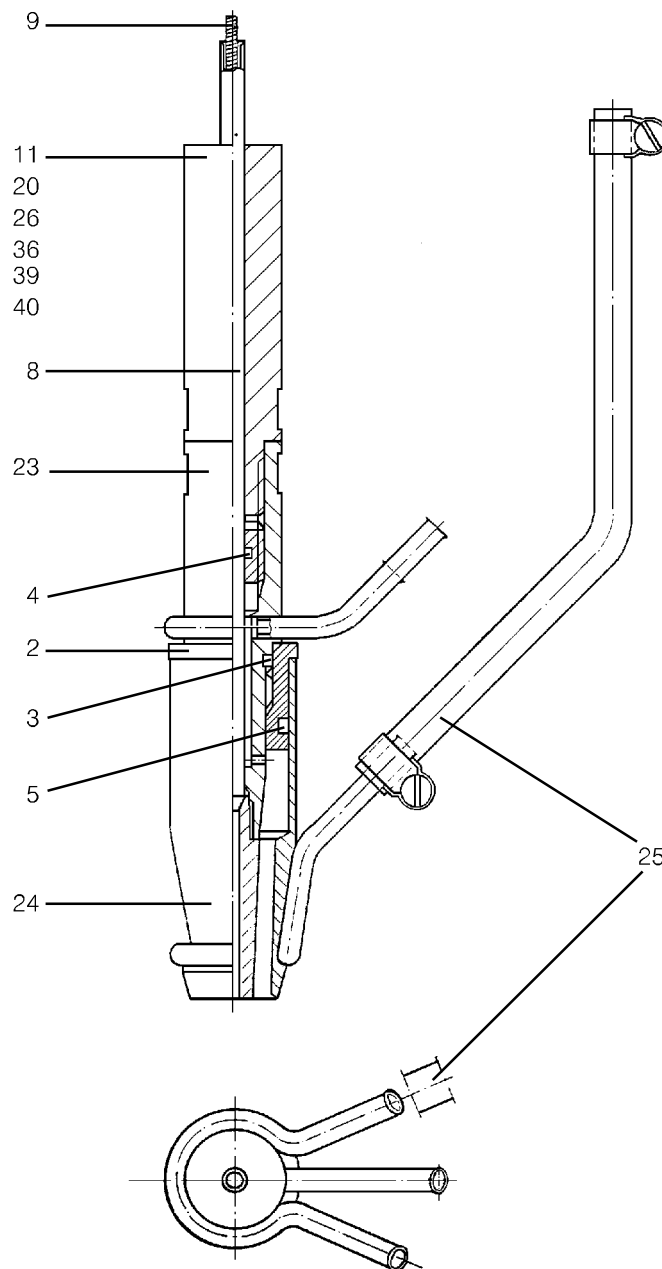
Item no.	Qty	Ordering no.	Denomination	Notes
		0153856884	Flux hopper without flux valve	
9	1	0810153001	Holder	
10	1	0153856780	Flux hopper, joint details	
11	1	0153347880	Flux valve	
		0153856780	Flux hopper, joint details	
1	1	0153853001	Flux hopper	11
2	1	0153854001	Pipe	
4	1	0153855001	Filter	



Item no.	Qty	Ordering no.	Denomination	Notes
		0153347880	Flux valve	
1	1	0153348001	Outlet	
2	1	0153349001	Shaft	
3	1	0211102938	Roll pin	d 3x20



Item no.	Qty	Ordering no.	Denomination	Notes
		0030465385	Connector	
2	1	0145226001	Insulating sleeve	
3	1	0190 680313	O-ring	OR 15.3x2.4
4	1	0190680303	O-ring	OR 5.3x2.4
5	1	0190680405	O-ring	OR 22.2x3
8	1	0334278880	Insert tube	
9	1	0334279001	Spiral	
20	1	0146094001	Extension	
23	1	0145534882	Contact tube	
24	1	0145227882	Gas nozzle	
25	1	0144998882	Water hose	L = 180



ESAB subsidiaries and representative offices

Europe

AUSTRIA

ESAB Ges.m.b.H
Vienna-Liesing
Tel: +43 1 888 25 11
Fax: +43 1 888 25 11 85

BELGIUM

S.A. ESAB N.V.
Brussels
Tel: +32 2 745 11 00
Fax: +32 2 745 11 28

THE CZECH REPUBLIC

ESAB VAMBERK s.r.o.
Prague
Tel: +420 2 819 40 885
Fax: +420 2 819 40 120

DENMARK

Aktieselskabet ESAB
Copenhagen-Valby
Tel: +45 36 30 01 11
Fax: +45 36 30 40 03

FINLAND

ESAB Oy
Helsinki
Tel: +358 9 547 761
Fax: +358 9 547 77 71

FRANCE

ESAB France S.A.
Cergy Pontoise
Tel: +33 1 30 75 55 00
Fax: +33 1 30 75 55 24

GERMANY

ESAB GmbH
Solingen
Tel: +49 212 298 0
Fax: +49 212 298 218

GREAT BRITAIN

ESAB Group (UK) Ltd
Waltham Cross
Tel: +44 1992 76 85 15
Fax: +44 1992 71 58 03

ESAB Automation Ltd

Andover
Tel: +44 1264 33 22 33
Fax: +44 1264 33 20 74

HUNGARY

ESAB Kft
Budapest
Tel: +36 1 20 44 182
Fax: +36 1 20 44 186

ITALY

ESAB Saldatura S.p.A.
Mesero (Mi)
Tel: +39 02 97 96 81
Fax: +39 02 97 28 91 81

THE NETHERLANDS

ESAB Nederland B.V.
Utrecht
Tel: +31 30 2485 377
Fax: +31 30 2485 260

NORWAY

AS ESAB
Larvik
Tel: +47 33 12 10 00
Fax: +47 33 11 52 03

POLAND

ESAB Sp.zo.o.
Katowice
Tel: +48 32 351 11 00
Fax: +48 32 351 11 20

PORTUGAL

ESAB Lda
Lisbon
Tel: +351 8 310 960
Fax: +351 1 859 1277

SLOVAKIA

ESAB Slovakia s.r.o.
Bratislava
Tel: +421 7 44 88 24 26
Fax: +421 7 44 88 87 41

SPAIN

ESAB Ibérica S.A.
Alcalá de Henares (MADRID)
Tel: +34 91 878 3600
Fax: +34 91 802 3461

SWEDEN

ESAB Sverige AB
Gothenburg
Tel: +46 31 50 95 00
Fax: +46 31 50 92 22

ESAB International AB

Gothenburg
Tel: +46 31 50 90 00
Fax: +46 31 50 93 60

SWITZERLAND

ESAB AG
Dietikon
Tel: +41 1 741 25 25
Fax: +41 1 740 30 55

North and South America

ARGENTINA

CONARCO
Buenos Aires
Tel: +54 11 4 753 4039
Fax: +54 11 4 753 6313

BRAZIL

ESAB S.A.
Contagem-MG
Tel: +55 31 2191 4333
Fax: +55 31 2191 4440

CANADA

ESAB Group Canada Inc.
Mississauga, Ontario
Tel: +1 905 670 02 20
Fax: +1 905 670 48 79

MEXICO

ESAB Mexico S.A.
Monterrey
Tel: +52 8 350 5959
Fax: +52 8 350 7554

USA

ESAB Welding & Cutting Products
Florence, SC
Tel: +1 843 669 44 11
Fax: +1 843 664 57 48

Asia/Pacific

CHINA

Shanghai ESAB A/P
Shanghai
Tel: +86 21 5308 9922
Fax: +86 21 6566 6622

INDIA

ESAB India Ltd
Calcutta
Tel: +91 33 478 45 17
Fax: +91 33 468 18 80

INDONESIA

P.T. ESABindo Pratama
Jakarta
Tel: +62 21 460 0188
Fax: +62 21 461 2929

JAPAN

ESAB Japan
Tokyo
Tel: +81 3 5296 7371
Fax: +81 3 5296 8080

MALAYSIA

ESAB (Malaysia) Snd Bhd
Shah Alam Selangor
Tel: +60 3 5511 3615
Fax: +60 3 5512 3552

SINGAPORE

ESAB Asia/Pacific Pte Ltd
Singapore
Tel: +65 6861 43 22
Fax: +65 6861 31 95

SOUTH KOREA

ESAB SeAH Corporation
Kyungnam
Tel: +82 55 269 8170
Fax: +82 55 289 8864

UNITED ARAB EMIRATES

ESAB Middle East FZE
Dubai
Tel: +971 4 887 21 11
Fax: +971 4 887 22 63

Representative offices

BULGARIA

ESAB Representative Office
Sofia
Tel/Fax: +359 2 974 42 88

EGYPT

ESAB Egypt
Dokki-Cairo
Tel: +20 2 390 96 69
Fax: +20 2 393 32 13

ROMANIA

ESAB Representative Office
Bucharest
Tel/Fax: +40 1 322 36 74

RUSSIA-CIS

ESAB Representative Office
Moscow
Tel: +7 095 937 98 20
Fax: +7 095 937 95 80

ESAB Representative Office

St Petersburg
Tel: +7 812 325 43 62
Fax: +7 812 325 66 85

Distributors

For addresses and phone numbers to our distributors in other countries, please visit our home page

www.esab.com



ESAB AB
SE-695 81 LAXÅ
SWEDEN
Phone +46 584 81 000

www.esab.com

